



VEGI Polyclonal Antibody

Catalog No	YP-Ab-15981
Isotype	IgG
Reactivity	Human;Rat;Mouse;
Applications	WB;IF;ELISA
Gene Name	TNFSF15
Protein Name	Tumor necrosis factor ligand superfamily member 15
Immunogen	The antiserum was produced against synthesized peptide derived from human TNFSF15. AA range:181-230
Specificity	VEGI Polyclonal Antibody detects endogenous levels of VEGI protein.
Formulation	Liquid in PBS containing 50% glycerol, 0.5% BSA and 0.02% sodium azide.
Source	Polyclonal, Rabbit,IgG
Purification	The antibody was affinity-purified from rabbit antiserum by affinity-chromatography using epitope-specific immunogen.
Dilution	Western Blot: 1/500 - 1/2000. Immunofluorescence: 1/200 - 1/1000. ELISA: 1/20000. Not yet tested in other applications.
Concentration	1 mg/ml
Purity	≥90%
Storage Stability	-20°C/1 year
Synonyms	TNFSF15; TL1; VEGI; Tumor necrosis factor ligand superfamily member 15; TNF ligand-related molecule 1; Vascular endothelial cell growth inhibitor
Observed Band	20kD
Cell Pathway	Membrane ; Single-pass type II membrane protein .; [Tumor necrosis factor ligand superfamily member 15, secreted form]: Secreted.
Tissue Specificity	Specifically expressed in endothelial cells. Detected in monocytes, placenta, lung, liver, kidney, skeletal muscle, pancreas, spleen, prostate, small intestine and colon.
Function	function:Receptor for TNFRSF25 and TNFRSF6B. Mediates activation of NF-kappa-B. Inhibits vascular endothelial growth and angiogenesis (in vitro). Promotes activation of caspases and apoptosis.,induction:Up-regulated by IL-1-alpha and TNF-alpha.,similarity:Belongs to the tumor necrosis factor family.,subunit:Homotrimer.,tissue specificity:Specifically expressed in endothelial cells. Detected in monocytes, placenta, lung, liver, kidney, skeletal muscle, pancreas, spleen, prostate, small intestine and colon.,
Background	The protein encoded by this gene is a cytokine that belongs to the tumor necrosis factor (TNF) ligand family. This protein is abundantly expressed in endothelial cells, but is not expressed in either B or T cells. The expression of this protein is inducible by TNF and IL-1 alpha. This cytokine is a ligand for receptor TNFRSF25 and decoy receptor TNFRSF21/DR6. It can activate NF-kappaB and MAP



kinases, and acts as an autocrine factor to induce apoptosis in endothelial cells. This cytokine is also found to inhibit endothelial cell proliferation, and thus may function as an angiogenesis inhibitor. Two transcript variants encoding different isoforms have been found for this gene. [provided by RefSeq, Feb 2011],

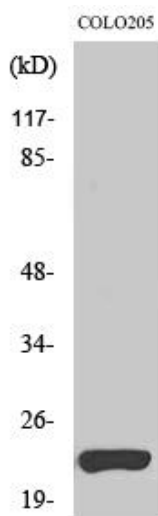
matters needing attention

Avoid repeated freezing and thawing!

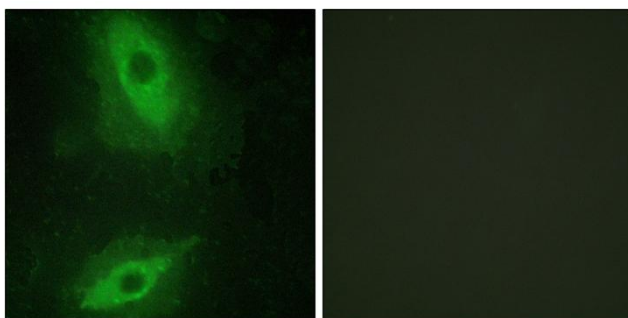
Usage suggestions

This product can be used in immunological reaction related experiments. For more information, please consult technical personnel.

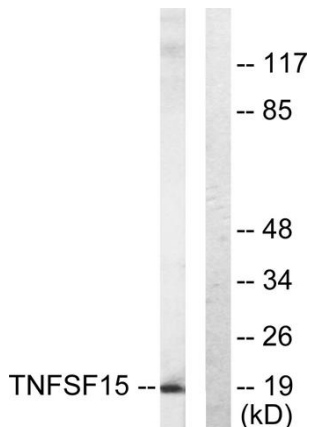
Products Images



Western Blot analysis of various cells using VEGI Polyclonal Antibody. Secondary antibody(catalog#:RS0002) was diluted at 1:20000



Immunofluorescence analysis of HeLa cells, using TNFSF15 Antibody. The picture on the right is blocked with the synthesized peptide.



Western blot analysis of lysates from COLO205 cells, using TNFSF15 Antibody. The lane on the right is blocked with the synthesized peptide.